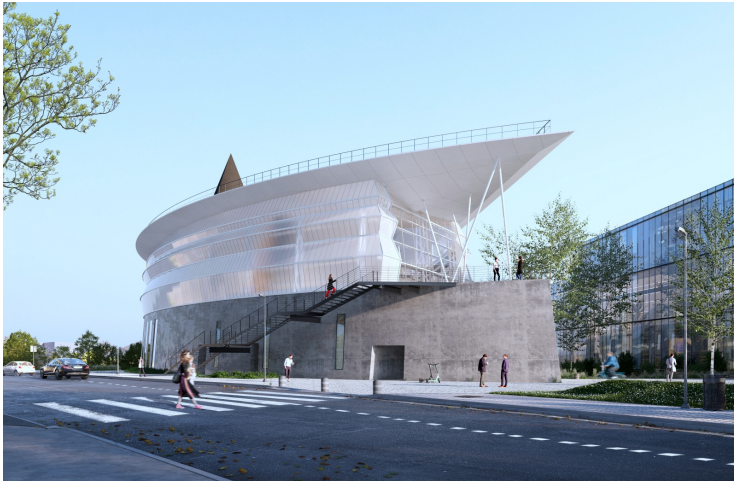


# REHABILITATION AND TRANSFORMATION OF THE RABELAIS BUILDING INTO A SPORTS FACILITY CHAMPS-SUR-MARNE



**Competition:** 2022

**Client:** Université Gustave Eiffel

**Surface Area:** 2100 m<sup>2</sup>

**Ecology:** Compliant with RT (French energy efficiency regulations)

**Cost:** 2.24 million euros

**This project aims to meet the expectations of students and staff of the University in terms of sports activities on campus. The program includes the creation of a weightlifting area, a fitness area, a combat area, a climbing wall, and additional facilities for users, including changing rooms, showers, restrooms, and a medical room. The project also includes the rehabilitation of the facade.**



We propose to create the new facade using polycarbonate panels. In terms of architectural expression, this approach remains true to the spirit of the original building. The new envelope is unified, using a single material, and maintains the initial composition by articulating a solid and mineral base with a light and transparent upper level. The new facade emphasizes the change of use, with dynamic expressions through angled elements, creating a sense of energy and subtly representing the concepts of contraction and effort.

Regarding the interior design, our approach involved exploring the potential uses that align with the needs outlined in the program while minimizing modifications to the existing layout. The main constraint is the presence of inclined metal columns, which restrict the space and available heights. Once we identified the areas capable of accommodating the different spaces in the program (available surface areas, clear heights), our intervention focused on establishing layouts that create a sequence of entry and reception, defining zones and activities, and creating a logical pathway for users.